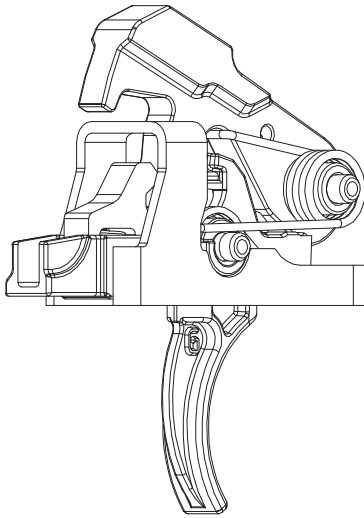


GEISSELE[®]

AUTOMATICS

We Manufacture Confidence[®]



SUPER SEMI-AUTOMATIC

MCX TRIGGER

Installation Instructions

READ THIS FIRST

Firearm safety is **YOUR** responsibility. You must memorize and put into practice the 4 Rules of Firearm Safety:

- 1. ASSUME EVERY WEAPON IS LOADED.**
- 2. KEEP YOUR FINGER OFF THE TRIGGER UNTIL YOU ARE READY TO SHOOT.**
- 3. DO NOT LET THE MUZZLE POINT AT ANYTHING YOU ARE NOT WILLING TO DESTROY.**
- 4. KNOW YOUR TARGET AND WHAT IS BEYOND.**

The Super MCX SSA was designed as a high performance, combat inspired two stage trigger. Derived from our CRANE Safety Certified M4 carbine trigger, the Super Semi-Automatic (SSA), the Super MCX delivers all of the same performance, reliability, safety and forgiveness features that the SSA possesses. The Super MCX is a 4.5lb., non-adjustable, two stage trigger that provides the shooter with precise and accurate trigger control. The trigger is light enough to be used in precision applications, but is forgiving enough to be used in demanding applications such as close quarter battle (CQB) scenarios. These features make the Super MCX ideal for hunting, law enforcement, and military type applications and makes this trigger a perfect trigger for all around use.

The Super MCX Trigger will lighten the trigger pull relative to a standard trigger. This lightened trigger pull will make the firearm easier to discharge. You must recognize and accept this fact before installing this trigger. If you do not want a lighter than standard trigger pull or are not willing to accept responsibility for the safety of your firearm, yourself, and those around you, do not install this trigger.

Geissele Automatics recommends installation by a certified gunsmith only

INSTALLATION INSTRUCTIONS

1. Unload rifle and make safe.
2. To remove the safety, first lift and open the tab located at the bottom of the grip. Loosen and remove grip screw.
3. After removing the grip, remove the safety detent spring, safety detent, takedown pin detent and takedown pin spring. Take note of which spring and detent goes to which part and their orientation. The safety selector and takedown pin can now be removed.
4. Remove existing trigger and clean receiver.
5. Remove the trigger pin from the trigger and replace with the slave pin to hold the disconnecter in place.
6. Insert the trigger subassembly into the trigger bridge by tilting the trunnions into the circular cutout of the bridge. Install the trigger with the bridge into the lower receiver. Check the attached diagram for correct groove location of the trigger pin before insertion. Insert trigger pin into receiver, through trigger/disconnector, and into receiver on opposite side.
7. Remove hammer pin from hammer. Place a drop of lubricant in the bore of the hammer pivot.
8. Install hammer into receiver with hammer spring legs **on top of the trigger pin**. Insert hammer pin into receiver, through hammer, and into receiver on opposite side.
9. Apply a small amount of lubricant in the following locations as shown on reverse side this page:
 - a. Each side of the disconnecter above the trigger pin
 - b. Hammer and trigger sears
 - c. Face of the disconnecter
 - d. Hammer tail where it contacts the disconnecter;
 - e. Top of each side of the hammer spring where the spring contacts the receiver wall.
10. After installation of the trigger group, the safety and takedown pin needs to be reinstalled.
11. Slide the safety and takedown pin back into the lower receiver. Ensure the slot of the takedown pin is facing down so the detent is captured within the slot. Ensure the safety is pointed towards safe or fire position.
12. Insert the detent pins back into the lower receiver. Insert the takedown pin spring into the counterbore of the lower receiver.
13. Insert the safety detent spring into the counterbore of the grip.
14. Now insert the grip against the lower receiver. The springs should apply pressure against the detents.
15. While the grip is against the receiver, tighten the grip screw using a 4mm hex drive T-handle. After reinstallation, confirm function of the safety and takedown pin.
16. Check safety operation: With the hammer cocked and the safety selector set to the SAFE position, pull the trigger hard. The hammer should not fall.
17. Check trigger reset: Set safety selector to FIRE. Dry fire weapon and keep trigger held back. Pull charging handle all the way back and release, letting the bolt carrier snap forward. The hammer should not fall. Release trigger. Hammer should be caught by the trigger.

18. Check for the presence of a second stage: Set the safety selector to FIRE. Pull the trigger through the first stage until it comes to a distinct stop—this is the second stage. Applying additional pressure to the trigger will allow the weapon to discharge.

Maintenance of the Super MCX trigger consists of occasionally placing a drop of lubricant on the locations shown in #7 above. Recommended lubricant is ALG Go Juice or equivalent; alternatively a high quality grease may be used on the trigger/hammer sears and disconnecter contact surfaces.

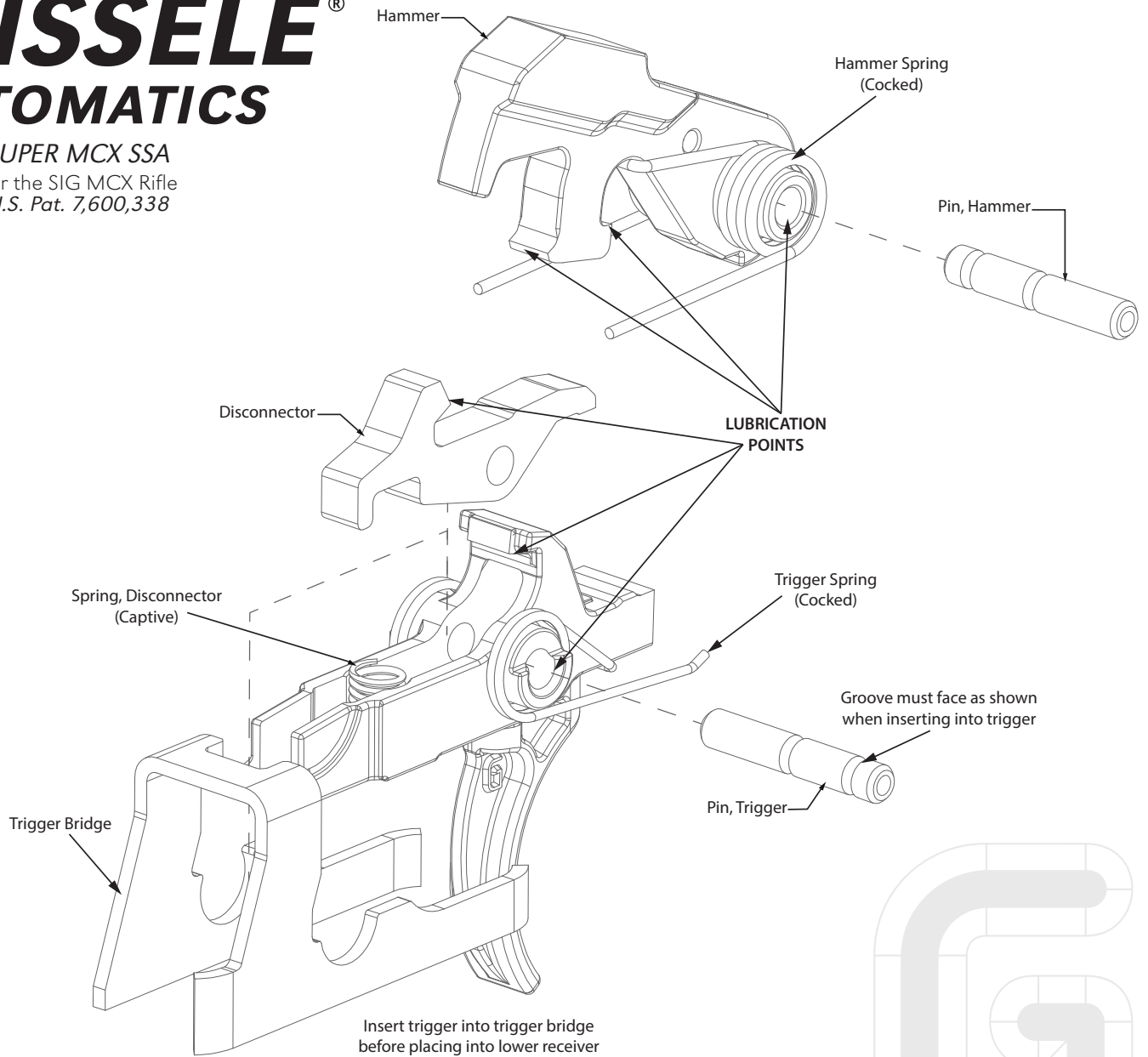
When the trigger and lower receiver well become very dirty (such as when firing with a suppressor), it is not always

necessary to remove the trigger group for cleaning. Spray down the trigger group with electrical contact cleaner to remove residual oil and dirt. Next, use compressed air to blow off the trigger group and then flush liberally with a light lubricant as ALG Go Juice or equivalent. Blow off excess lubricant with compressed air and lubricate as noted above.

Thank You For Your Purchase.
Contact Geissele Automatics with any questions.
GEISSELE AUTOMATICS • 800 NORTH WALES RD • NORTH WALES, PA 19454
TEL: 610-272-2060 | FAX: 610-272-2069
E-MAIL: INFO@GEISSELE.COM | WEB: WWW.GEISSELE.COM
PATENTS: WWW.GEISSELE.COM/PATENTS
GEISSELE AUTOMATICS MCX TRIGGER INSTRUCTIONS VERSION 1 - 06/22/17

GEISSELE[®] AUTOMATICS

SUPER MCX SSA
 For the SIG MCX Rifle
U.S. Pat. 7,600,338



TRIGGER PROFILE MAY VARY

